

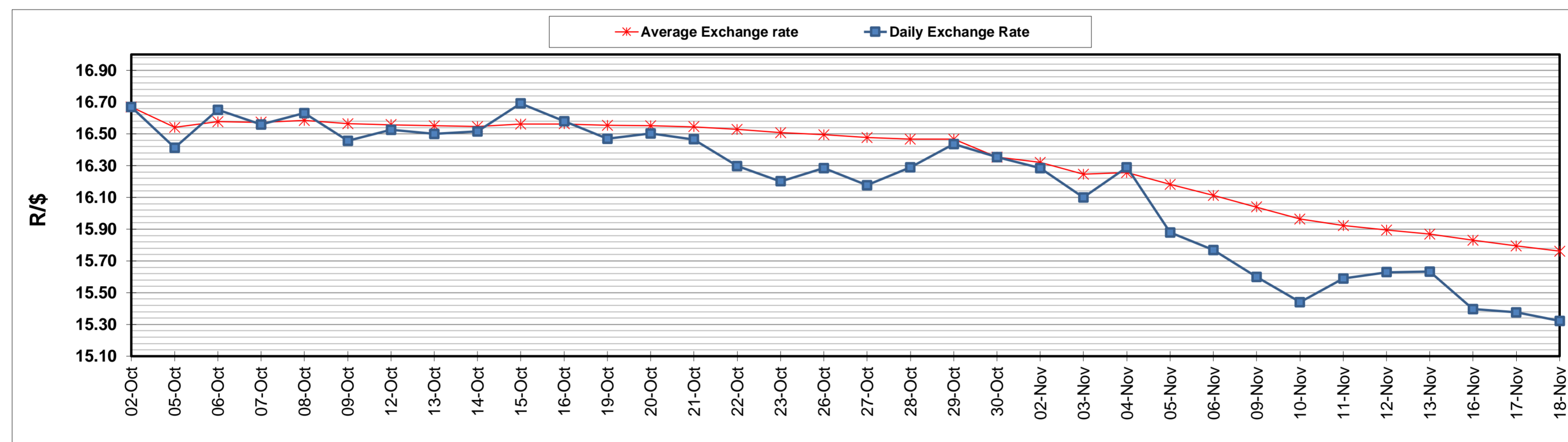
	PETROL 95 ULP	PETROL 93 ULP & LRP	DIESEL 0.05%	DIESEL 0.005%	ILL. PAR.
GAUTENG PUMP PRICE (SA c/l) AS FROM 04/11/2020	1,459.000	1,439.000	-	-	-
WHOLESALE PRICE (SA c/l) AS FROM 04/11/2020	-	-	1,225.560	1,227.960	655.828
SINGLE NATIONAL MAXIMUM RETAIL PRICE	-	-	-	-	818.000
BASIC FUEL PRICE - 18/11/2020 (SA c/l)	478.994	471.721	495.920	497.340	474.257
PRESS RELEASE CONTRIBUTION TO BFP 04/11/2020 - 18/11/2020 (SA c/l)	506.470	496.470	474.630	477.030	451.128
UNIT OVER/(UNDER) RECOVERY - 18/11/2020 (SA c/l)	27.476	24.749	(21.290)	(20.310)	(23.129)
AVERAGE BASIC FUEL PRICE 30/10/2020 - 18/11/2020	478.171	469.986	477.193	479.577	459.839
AVERAGE UNIT OVER/(UNDER) RECOVERY 30/10/2020 - 18/11/2020	34.085	32.270	0.008	(0.189)	(11.926)

ANALYSIS MOVEMENT OF AVERAGE OVER/(UNDER) RECOVERY

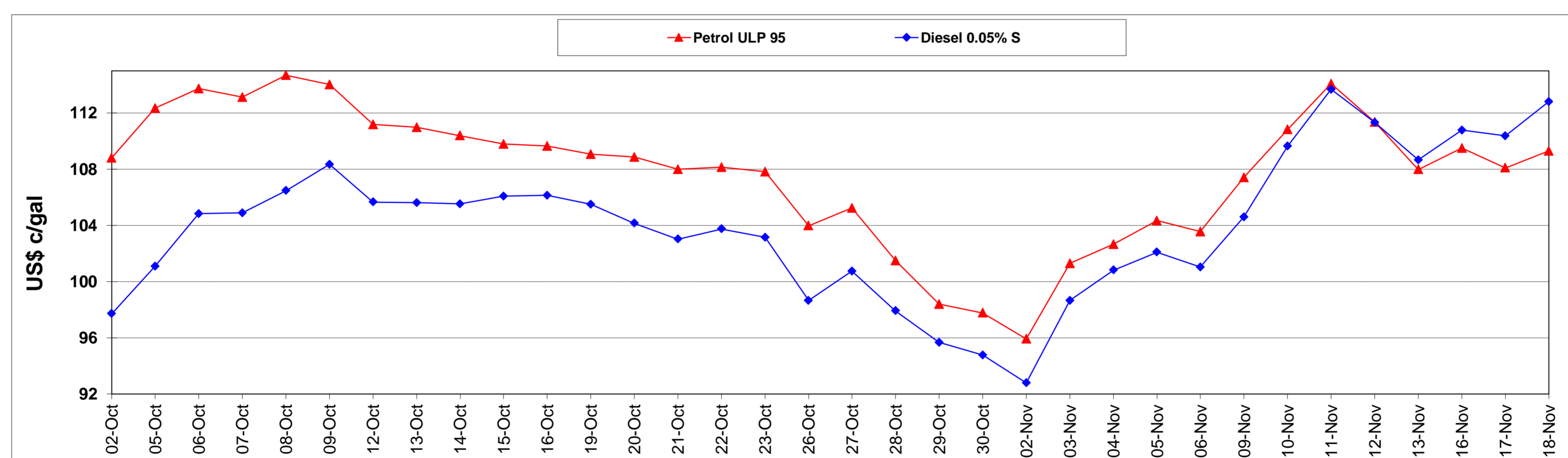
	PETROL 95	PETROL 93	DIESEL 0.05%	DIESEL 0.005%	ILL. PAR.
- MOVEMENT IN INTERNATIONAL PRODUCT PRICES	12.727	11.278	(21.306)	(21.610)	(32.464)
- MOVEMENT IN EXCHANGE RATE	21.358	20.992	21.314	21.420	20.539
AVERAGE UNIT OVER/(UNDER) RECOVERY 30/10/2020 - 18/11/2020	34.085	32.270	0.008	(0.189)	(11.926)

R/\$ EXCHANGE RATE - (R/\$15.3225 - 18/11/2020)

EXCHANGE RATE USED IN BASIC FUEL PRICE



INTERNATIONAL PRODUCT PRICES OF BASKET USED IN BASIC FUEL PRICE



BASIC FUEL PRICE IN SA CENTS PER LITRE

